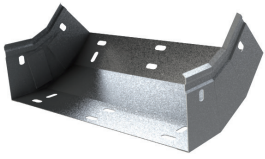


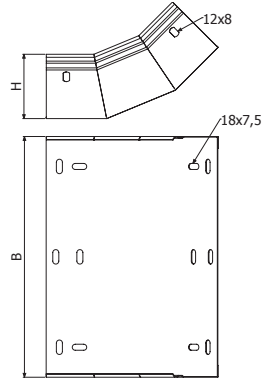


BASORTRAY

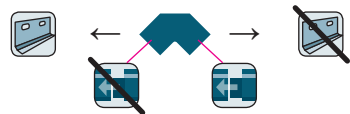
CCERC45



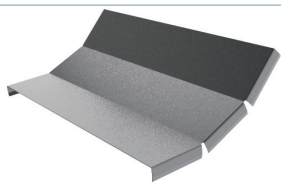
	B		H		GS		GC		i304		i316	
	mm	inch	mm	inch	REF.	kg/ud	REF.	kg/ud	REF.	kg/ud	REF.	kg/ud
CCERC45 100X60	100	4"	60	2 3/8"	2/14531	0,42	2/14545	0,49				
CCERC45 150X60	150	6"	60	2 3/8"	2/14532	0,50	2/14546	0,58				
CCERC45 200X60	200	8"	60	2 3/8"	2/14533	0,57	2/14547	0,66				
CCERC45 300X60	300	12"	60	2 3/8"	2/14534	0,73	2/14548	0,85				
CCERC45 400X60	400	16"	60	2 3/8"	2/14535	0,89	2/14549	1,03				
CCERC45 500X60	500	20"	60	2 3/8"	2/14536	1,04	2/14550	1,21				
CCERC45 600X60	600	24"	60	2 3/8"	2/14537	1,20	2/14551	1,39				
CCERC45 100X80	100	4"	80	3 1/7"	2/7111	0,48	2/8410	0,56	2/17937	0,48	2/18259	0,48
CCERC45 150X80	150	6"	80	3 1/7"	2/7112	0,56	2/8411	0,65	2/17938	0,56	2/18260	0,56
CCERC45 200X80	200	8"	80	3 1/7"	2/7113	0,64	2/8412	0,74	2/17939	0,64	2/18261	0,64
CCERC45 300X80	300	12"	80	3 1/7"	2/7114	0,79	2/8413	0,92	2/17940	0,79	2/18262	0,79
CCERC45 400X80	400	16"	80	3 1/7"	2/8404	0,95	2/8414	1,10	2/17941	0,95	2/18263	0,95
CCERC45 500X80	500	20"	80	3 1/7"	2/8405	1,11	2/8415	1,29	2/17942	1,11	2/18264	1,11
CCERC45 600X80	600	24"	80	3 1/7"	2/8406	1,26	2/8416	1,46	2/17943	1,26	2/18265	1,26
CCERC45 100X100	100	4"	100	4"	2/14538	0,54	2/14552	0,63				
CCERC45 150X100	150	6"	100	4"	2/14539	0,62	2/14553	0,72				
CCERC45 200X100	200	8"	100	4"	2/14540	0,70	2/14554	0,81				
CCERC45 300X100	300	12"	100	4"	2/14541	0,86	2/14555	1,00				
CCERC45 400X100	400	16"	100	4"	2/14542	1,01	2/14556	1,17				
CCERC45 500X100	500	20"	100	4"	2/14543	1,17	2/14557	1,36				
CCERC45 600X100	600	24"	100	4"	2/14544	1,33	2/14558	1,54				



2 x JUER



TCCERC45



	B		GS		GC		i304		i316	
	mm	inch	REF.	kg/ud	REF.	kg/ud	REF.	kg/m	REF.	kg/ud
TCCERC45 100	100	4"	2/7115	0,12	2/8417	0,14	2/17944	1,64	2/18266	1,64
TCCERC45 150	150	6"	2/7116	0,16	2/8418	0,19	2/17945	2,64	2/18267	2,64
TCCERC45 200	200	8"	2/7117	0,21	2/8419	0,24	2/17946	3,64	2/18268	3,64
TCCERC45 300	300	12"	2/7118	0,29	2/8420	0,34	2/17947	4,64	2/18269	4,64
TCCERC45 400	400	16"	2/8407	0,38	2/8421	0,44	2/17948	5,64	2/18270	5,64
TCCERC45 500	500	20"	2/8408	0,47	2/8422	0,54	2/17949	6,64	2/18271	6,64
TCCERC45 600	600	24"	2/8409	0,55	2/8423	0,64	2/17950	7,64	2/18272	7,64

